

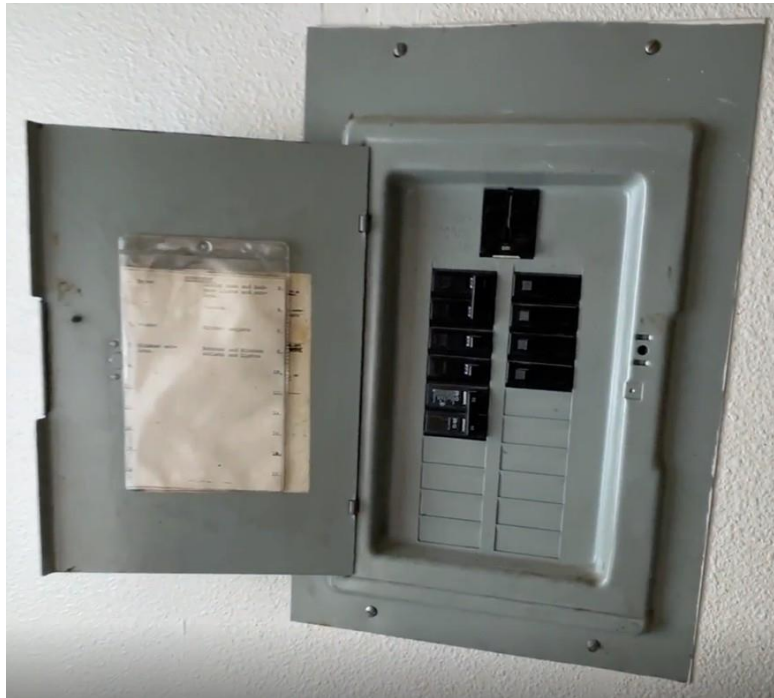
Larsen Bay rental #5 – propane stove conversion to electric
1201 First St.



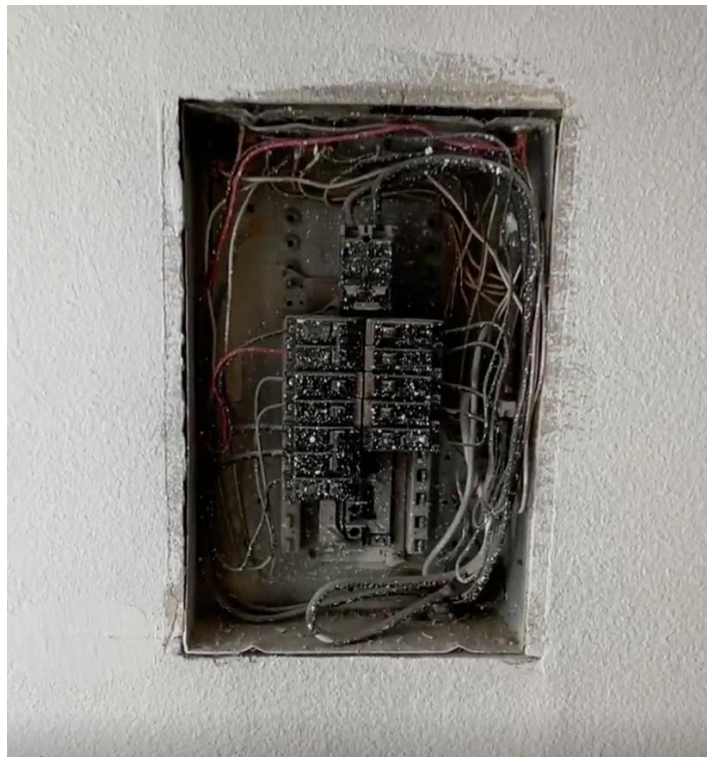
Panel replacements:
Cliff Wood 1319 Selief Lane



Old Harbor Lot 12 Block 1A



Old Harbor Lot 3A Block 5



Old Harbor Lot 10 Block 1A

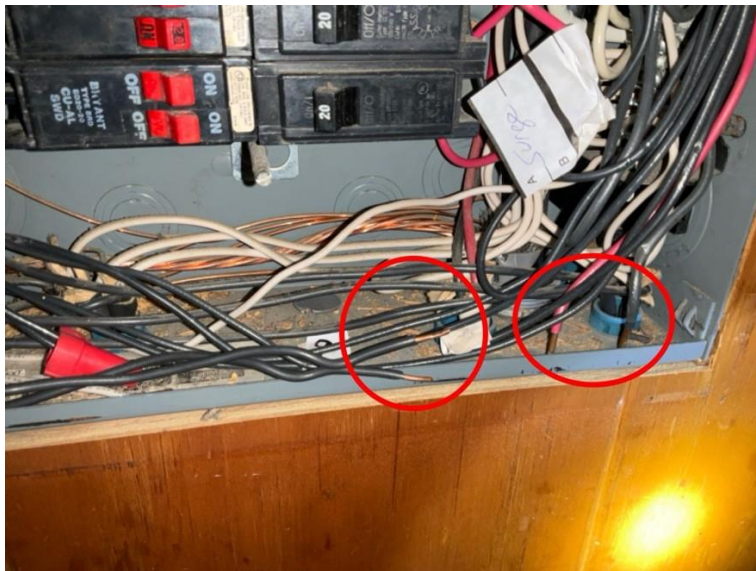


Akhiok Homestart Lot 6A Block 2

CB MAIN PANEL 62: The protective 'dead front' cover, which helps prevent hazardous shocks, is missing from the service panel. We recommend it be replaced.



Subpanel 64: Wiring within the subpanel is not properly terminated.



Subpanel 65: Wires are loose where it enters the subpanel. Recommend the cable be secured by installing an approved connector.

