

ADC AD-50V

50-lb Capacity OPL Dryer

Standard Features:

- 50-lb. capacity
- 18.30 cu. ft. basket volume
- 150,000 Btu/hr heat input, 750 cfm airflow
- Radial airflow
- Steel door with gasketless glass
- Self-diagnostic microprocessor
- Easy-to-clean lint drawer
- Fit through standard 36" door
- Available in gas, steam and electric heat

Optional Features:

- Stainless steel front, cabinet & basket
- S.A.F.E. (Sensor Activated Fire Extinguishing System)
- Reversing basket



AD-50V OPL Dryer

Why Purchase ADC AD-50V?

Engineer-Driven Design That is Built to Last

Our dryers showcase ADC's engineer-driven approach to design. Bearings are permanently lubricated on the motor and drive system. There are no chains used at ADC; rather, we use V-belts and pulleys for smooth, quiet, and trouble-free operation. Our dryer cabinets are electrostatically powder-painted inside and out, then baked at 420-degrees fahrenheit before final assembly—ensuring the hardest surface and the longest-lasting finish in the industry.

Rugged Steel Door with Gasketless Door Glass

Our dryer doors are one solid piece of steel with gasketless glass. This eliminates the issue of glass falling out due to wear and tear on rubber gaskets that some manufacturers use to secure their glass. The security and durability that gasketless glass provides is essential to a successful laundromat operation.

Easy-to-Read, Multilingual Controls

We were the first to bring computer-operated dryers to the market and today we continue to be a leader in applying technology to dryer operation. Our years of experience along with our accessible design, easy-to-read LED screens and our user-friendly multilingual interface positions ADC as the pioneer in the laundry industry.

Your local ADC independent authorized distributor



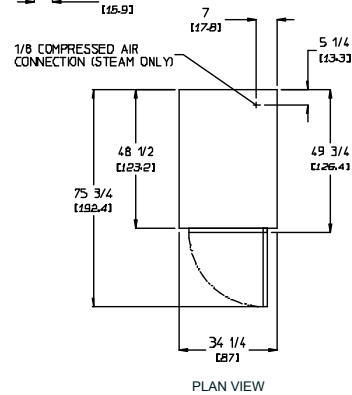
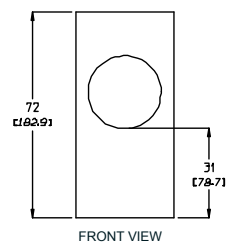
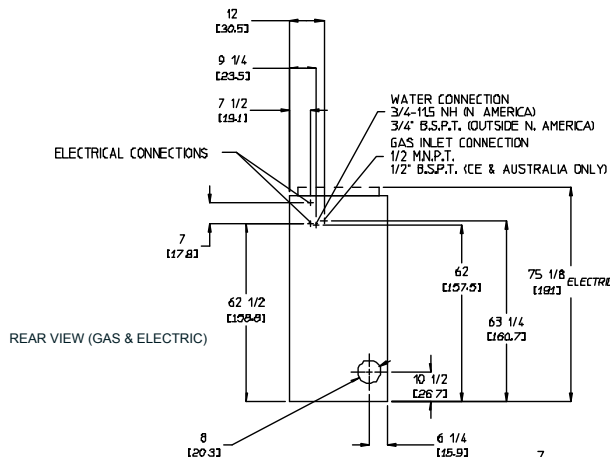
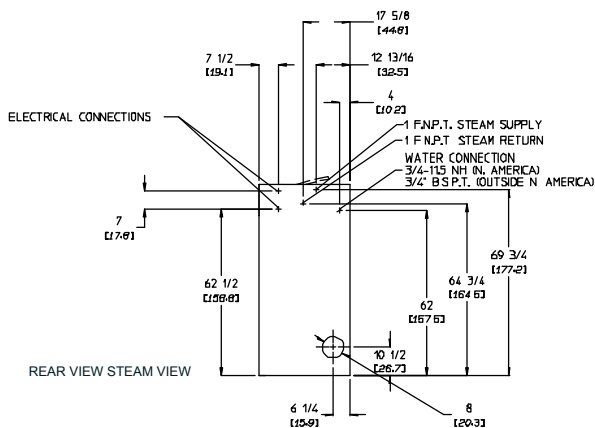
ADC AD-50V

AD-50V Specifications			
Tumbler Capacity (dry weight)		50 lbs. (22.68 kg)	
Tumbler Diameter		32-3/4" (83.19 cm)	
Tumbler Depth		37-1/2" (95.25 cm)	
Tumbler Volume		18.30 cu ft (518.20 L)	
Tumbler/Drive Motor (non-reversing/reversing)		3/4 hp / 1/2 hp* (0.56 kW / 0.37 kW)	
Blower/Fan Motor (non-reversing/reversing)		-- / 1/2 hp* (0.37 kW)	
Door Opening (Diameter)		21-1/2" (54.61 cm)	
Door Sill Height		33-1/8" (84.15 cm)	
S.A.F.E. Water Connection		3/4"-11.5 NH (North America) 3/4" B.S.P.T. (Outside North America)	
Dryers per 20'/40' Container		10 / 20	
Dryers per 48'/53' Truck		24 / 26	
Width		34-1/4" (87 cm)	
Depth		49-3/4" (126.4 cm)	
Height		72" (182.9 cm)	
Airflow	60 Hz	750 cfm (21.24 cmm)	
gas/electric/steam	50 Hz	625 cfm (17.70 cmm)	
Exhaust Connection (Diameter)		8" (20.32 cm)	
GAS MODEL:			
Approx. Net Wt.		651 lbs (295.29 kg)	
Approx. Ship Wt.		700 lbs (317.51 kg)	
Heat Input		150,000 btu/hr (37,799 kcal/hr)	
Inlet Pipe Connection		1/2" M.N.P.T.**	
		1/2" B.S.P.T. (CE and Australia Only)	
ELECTRICAL MODEL:			
Oven Size		Approx. Net Wt.	
		Approx. Ship Wt.	
kW	Btu/hr (kcal/hr)	651 lbs (295.29 kg)	
20	68,200 (17,200)	700 lbs (317.51 kg)	
24	81,900 (20,600)		
30	102,400 (25,800)		
STEAM MODEL:***			
Approx. Net Wt.		683 lbs (309.80 kg)	
Approx. Ship Wt.		733 lbs (332.48 kg)	
Steam Consumption		142 lb/hr (64.41 kg/hr)	
Operating Steam Pressure		125 psi max (8.62 bar)	
Boiler Horsepower (Normal Load)		4.1 Bhp	
Supply Connection		1" F.N.P.T.**	
Return Connection		1" F.N.P.T. **	

REV 6/4/12

** Size of piping to dryer varies with installation conditions. Contact factory for assistance.

tem must be provided with clean, dry, and regulated 80 psi +/- 10 psi (5.51 bar +/- 0.69 bar) air supply.



Electrical Service Specifications					
SERVICE VOLTAGE	PHASE	WIRE SERVICE	APPROX AMP DRAW		CIRCUIT BREAKER
			60 Hz	50 Hz	
GAS & STEAM					
100	1ø	2	12.3	--	20
120	1ø	2	12.0	--	20
208	1ø	2	7.1	--	15
220	1ø	2	7.0	5.3	15
230	1ø	2*	--	4.9	15
240	1ø	2	6.5	4.2	15

Electrical Service Specifications					
SERVICE VOLTAGE	PHASE	WIRE SERVICE	APPROX AMP DRAW		CIRCUIT BREAKER
			60 Hz	50 Hz	
GAS & STEAM					
208	3ø	3	3.0	--	15
220	3ø	3	3.8	--	15
230	3ø	3	--	3.6	15
240	3ø	3	3.2	--	15
380	3ø	4*	--	2.2	15
400	3ø	4*		2.2	15
416	3ø	4*		2.3	15
460	3ø	3	2.1		15
480	3ø	3	2.1	--	15

SERVICE VOLTAGE	PHASE	WIRE SERVICE	APPROX AMP DRAW		CIRCUIT BREAKER	SERVICE VOLTAGE	PHASE	WIRE SERVICE	APPROX AMP DRAW		CIRCUIT BREAKER
			60 Hz	50 Hz					60 Hz	50 Hz	
30 kW Electric						20 kW Electric					
208	3ø	3	90	--	125	208	1ø	2	103	--	150
220	3ø	3	86	84	125	220	1ø	2	96	--	125
230	3ø	3	79	80	100	230	1ø	2	93	92	125
240	3ø	3	79	--	100						
380	3ø	4*	52	51	70	24 kW Electric					
400	3ø	4*	--	48	60	208	3ø	3	74	--	100
416	3ø	4*	--	47	60						
440	3ø	3	42	--	60	230	3ø	3	--	65	80
460	3ø	3	40	--	50	240	3ø	3	64	--	80
480	3ø	3	38	--	50	380	3ø	4*	43	42	60
575	3ø	3	32	--	40	416	3ø	4*	--	38	50
600	3ø	3	31	--	40	480	3ø	3	31	--	40

QY160010 1/17

88 Curren Road, Fall River, MA 02720-4781 • 508.678.9000

www.adclaundry.com

